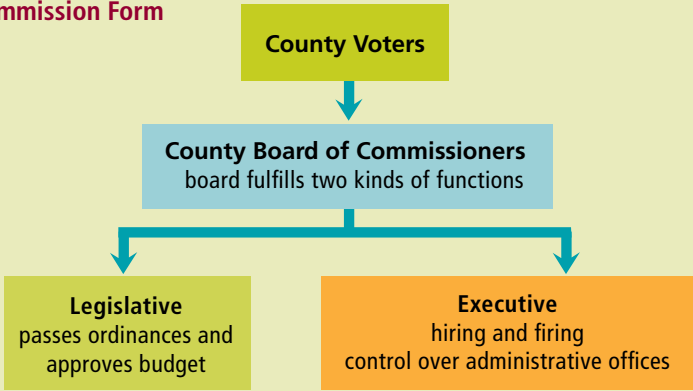


FIGURE 11-2

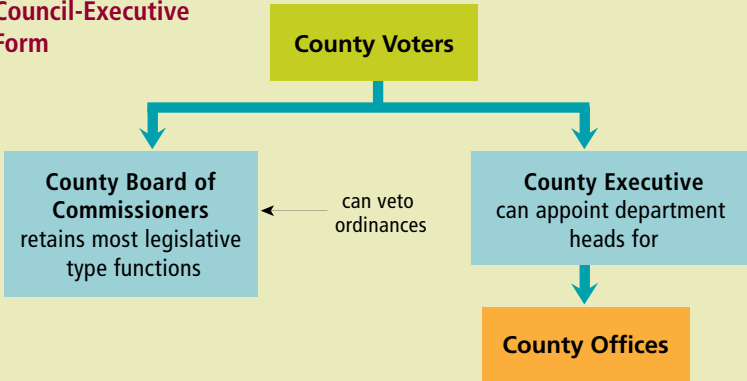
HOW IT WORKS

The Structure of County Government

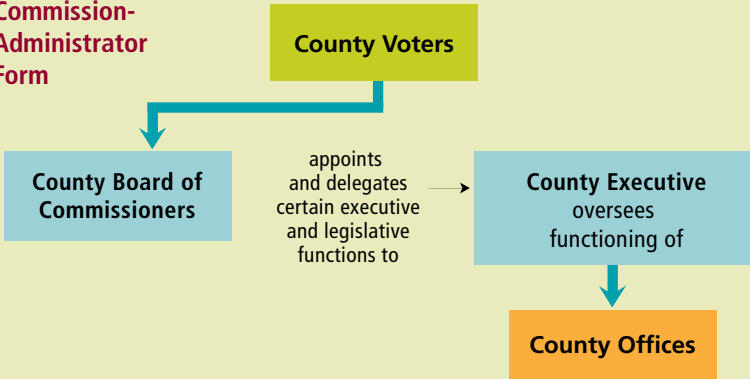
Commission Form



Council-Executive Form



Commission-Administrator Form



The three basic forms of county government differ in the division of powers and in who is responsible for day-to-day administration of county government. In the commission form, voters elect county commissioners who exercise legislative and executive powers and exercise considerable authority over day-to-day administration. In the council-executive form, voters elect commissioners who exercise legislative powers and independently elect a county executive who wields executive powers and serves as the chief administrator. In the commission-administrator form, voters elect commissioners who retain most legislative and executive powers. However, they hire a professional manager to handle day-to-day administration of county government.